

Speciated Mercury Analysis

“Specialised Analysis Simplified.”

Leeder Consulting specialise in non-routine laboratory analysis. Independence and commitment to your project’s “**data quality objectives**” enables us to suggest innovative and cost effective solutions. If it is high-tech, challenging, difficult or out of the ordinary - call us now.

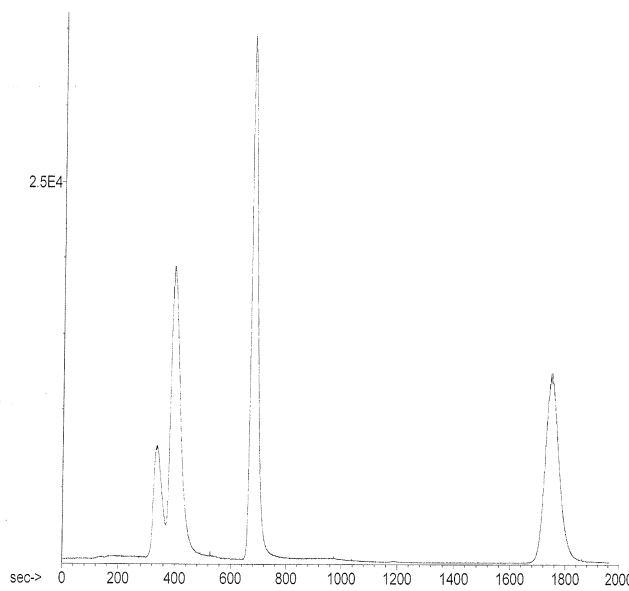
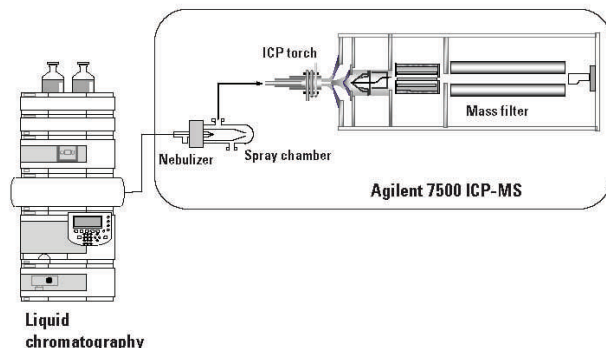
Speciated Mercury Analysis

Leeder Consulting offer a new method for detecting inorganic mercury and organomercury compounds in waters, soils, stack gases, and tissue.

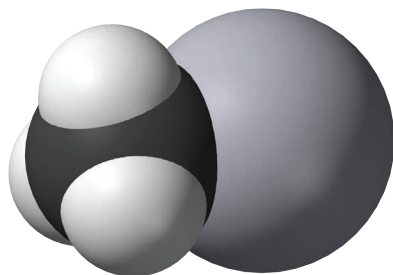
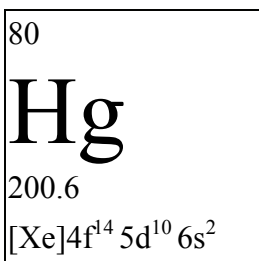
Speciating mercury compounds found in the environment is increasingly important as the mobility and bio-availability of mercury is dependant on its chemical form. Organomercury species such as methyl mercury, ethyl mercury and phenyl mercury are at least an order of magnitude more toxic to fauna in the environment due to their increased solubility.

All these mercury compounds can be analysed in different matrices in one comprehensive LC-ICP-MS based test. Leeder Consulting has attained NATA accreditation for the analysis of mercury and methyl mercury at the detection limits in the table below.

	Mercury	Methyl Mercury
Waters	0.2 µg/L	0.02 µg/L
Soils	0.5 µg/kg	0.05 µg/kg
Stack gases	0.005—0.05 µg/m ³ depending on sampling method	
Tissue and Biota	0.5 µg/kg	0.05 µg/kg



Pictured above is a section of the total ion chromatogram of a mercury standard. The four peaks (from left to right) are methyl mercury, mercury, ethyl mercury, and phenyl mercury.



Quality Assurance and Quality Control are primary considerations when undertaking specialist analytical work. Leeder Consulting's Management Systems are **AS/NZS ISO 9001 Certified**, the laboratory is **NATA Accredited** and is a **Registered Quarantine Laboratory**.

Leeder Consulting offer a range of specialised high-tech, non-routine and on-site services. Access to leading edge technology and expertise in Australia and overseas guarantees results when and where you require. To discuss your requirements or for more information **call us now**.

